

## Workstream “Measuring progress: GCM indicators” Mapping of indicator frameworks (Mapping 1)

### 1. Background context and process

In paragraph 70 of the [Progress Declaration](#) of the International Migration Review Forum (IMRF), Member States specified that the proposal for a limited set of indicators should draw “on the global indicator framework for the Sustainable Development Goals and targets of the 2030 Agenda as contained in General Assembly resolution 71/313 of 6 July 2017 and other relevant frameworks”. For this reason, as part of its workplan, the United Nations Network on Migration workstream on “Development of a proposed limited set of indicators to review progress related to GCM implementation” committed to conducting a mapping of relevant approaches to measure the governance of migration in general, with a specific focus on the progress achieved in implementing the Global Compact for Safe, Orderly and Regular Migration (GCM), giving priority to those endorsed by an intergovernmental UN body.

The mapping of relevant approaches is being conducted in two steps: a mapping of indicators frameworks<sup>1</sup> (Mapping 1) and a mapping of specific indicators drawn from those frameworks (Mapping 2).<sup>2</sup> These two mappings, together with additional inputs from, and discussions among, the members of the workstream, will inform the first proposal for the limited set of indicators, to be disseminated through a discussion note. The discussion note will serve as the starting point for the five regional consultations to be held in July 2023.

This document focuses on Mapping 1 – Mapping of existing indicator frameworks. Section 2 presents the methodological approach adopted and describes the five criteria used to compare the various indicator frameworks. Sections 3 and 4 present the results of the comparison of the indicator frameworks based on the five criteria. Drawing from this analysis, section 5 proposes a sub-set of indicator frameworks to be considered in Mapping 2.

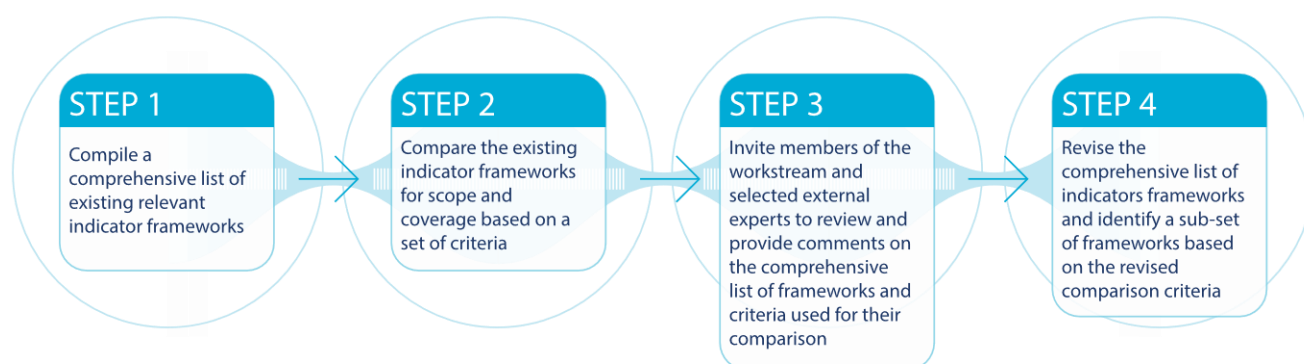
---

<sup>1</sup> An indicator framework is a simple and concise way to present data and help show the relevance and connection between different indicators. In a framework, data can be grouped or categorized and are often shown alongside detailed descriptions of associated measures and methods of calculation. An indicator is a single data element – a snapshot of the state, level or measure of something.

<sup>2</sup> In Mapping 2, the workstream will focus on individual indicators drawn from the indicator frameworks that best meet the comparison criteria in Mapping 1.

To ensure that the list of indicator frameworks considered was comprehensive and that the criteria used for their comparison were appropriate, members of the workstream<sup>3</sup> and selected additional experts<sup>4</sup> were invited to provide comments. Their feedback and comments served to revise the list of indicator frameworks and refine the criteria used for Mapping 1 (see Figure 1).

**Figure 1.**  
**Schematic representation of the process to map the indicator frameworks (Mapping 1)**



## 2. Methodological approach

### 2.1. Identification of existing indicator frameworks

As a first step, the workstream compiled a comprehensive list of relevant indicator frameworks to measure migration governance. This list was identified based on an analysis of relevant literature, including policy reports and academic sources, internet searches and focused discussions with experts. Only indicator frameworks deemed relevant for monitoring the implementation of at least one GCM objective were included.

Data sources, datasets and guidelines for collecting or analysing migration data were considered but ultimately not included.<sup>5</sup> While in many cases there are close links between such frameworks and data sources, datasets and guidelines, Mapping 1 focuses exclusively on indicator frameworks.

Based on this review, the following 31 indicator frameworks were identified (in alphabetical order):

<sup>3</sup> Members of the workstreams (as of May 2023) were: Gender Hub+, Global Research Forum on Diaspora and Transnationalism, International Fund for Agricultural Development (IFAD), International Labour Organization (ILO), International Organisation for Migration (IOM), International Trade Union Confederation (ITUC), Mayors Migration Council, Office of the High Commissioner for Human Rights (OHCHR), United Nations Department of Economic and Social Affairs (UN DESA), United Nations Development Programme (UNDP), United Nations High Commissioner for Refugees (UNHCR), United Nations International Children's Emergency Fund (UNICEF), World Bank, and World Health Organization (WHO).

<sup>4</sup> Five external experts from different regions were invited to provide comments. Of these, Mr. Francesco Pasetti, CIDOB and Pompeu Fabra University, replied.

<sup>5</sup> Examples of data sources, datasets and guidelines that were considered but ultimately not included in the comprehensive list include the *United Nations Principles and Recommendations for Population and Housing Censuses* and the *Guidelines concerning statistics of international labour migration* (guidelines); the *United Nations Inquiry among Governments on Population and Development* (data source); and *UN International Migrant Stock* and the *Remittance Prices Worldwide* (datasets),

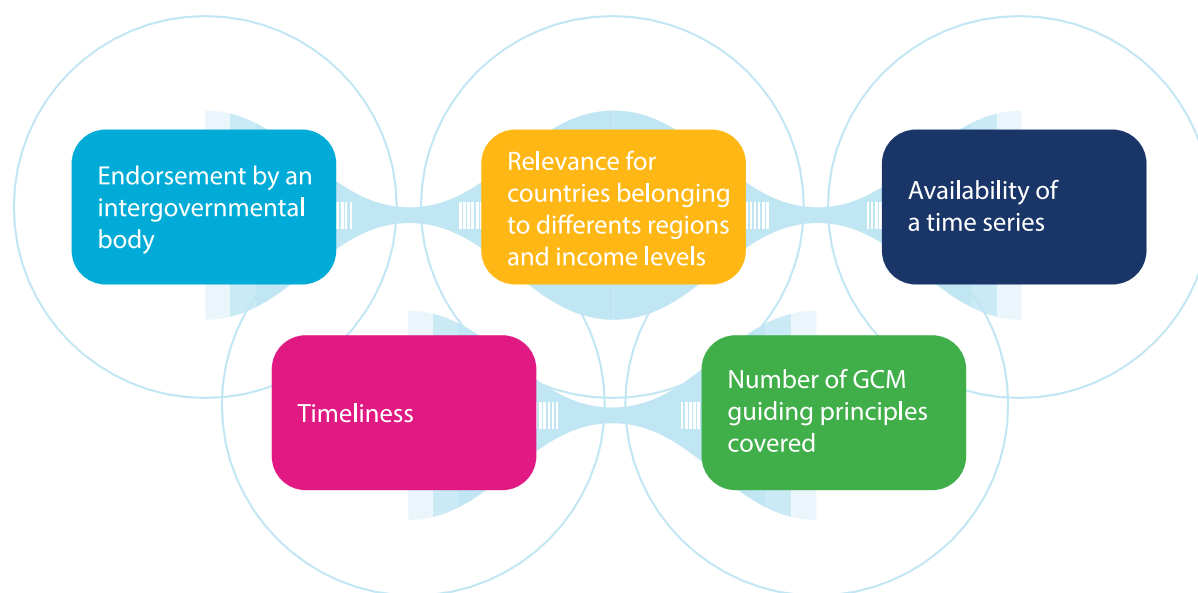
- Advancing Alternative Migration Governance
- Analytical Framework and Indicators for Monitoring and Reporting on the Implementation of GCM commitments related to Addressing Human Mobility Challenges in the Context of Disasters, Climate Change and Environmental Degradation (A and B)
- CITLAW Global Birthright Indicators
- Child Protection Outcome Indicators
- Commitment to development Index: Migration
- CrossMigration policy indicators
- Determinants of international migration (DEMIG)
- Displacement indicators for Disaster Risk Reduction
- Emigrant Policy Index
- Every Immigrant Is an Emigrant: How Migration Policies Shape the Paths to Integration (IMISEM)
- Global Compact on Refugees Indicator Framework
- Human Rights Indicators for Migrants and their Families
- Immigration for employment index (IMMEX)
- Immigration Policies in Comparison (IMPIC)
- Index on strictness of migration policy
- Indicators of Citizenship Rights for Immigrants (ICRI)
- Indicators of Immigrant Integration
- International Data Alliance for Children on the Move (IDAC) Guidelines on Indicators for Children on the Move
- International Migration Policy and Law Analysis (IMPALA)
- MACIMIDE Global Expatriate Dual Citizenship Dataset
- Measuring Policy Coherence for Migration and Development
- Migration Governance Indicators (MGI)
- Migrant Integration Policy Index (MIPEX)
- Migrant Rights Initiative/ database
- Multiculturalism Policy Index
- OECD Indicators of Talent Attractiveness
- RemitSCOPE
- SDG Indicator Framework
- Sendai Framework Indicators
- Statelessness index
- UN Expert Group on Migration Statistics (EGMIS) Indicators

Of these, 16 were developed by academic or research institutions, 3 by civil society and the remaining 12 by international organizations or processes facilitated by international organizations. The hyperlinks to access these frameworks are available in Annex 1.

## 2.2. Comparison criteria

As a second step, the workstream identified a set of five comparison criteria<sup>6</sup> (Figure 2). These criteria were identified building on the provisions in Paragraph 70 of the IMRF Progress Declaration and the responses provided by member states and stakeholders to a [questionnaire](#) on the critical elements that should be reflected in the proposal for a limited set of indicators.

**Figure 2.**  
**Comparison criteria**



The justification for the inclusion of each of the comparison criteria is as follows:

- 1 Endorsement by an intergovernmental body** was deemed important because Paragraph 70 of the IMRF specified that the limited set of indicators should draw “on the global indicator framework for the Sustainable Development Goals and targets of the 2030 Agenda for Sustainable Development as contained in General Assembly resolution 71/313 of 6 July 2017”. Further, 74 per cent of respondents to the questionnaire agreed that the proposal for a limited set of indicators should build on existing reporting requirements and mandates. Indicator frameworks that have been endorsed by intergovernmental bodies tend to have many advantages compared to other types of frameworks, having often undergone a higher level of review and scrutiny of the relevance, scope and feasibility of the framework as well as of the metadata of the indicators included in the framework.

<sup>6</sup> The original proposal consisted of seven criteria which were revised following feedback from the members of the workstream. It was then decided that the criteria “data availability by country” and “coverage by GCM objective” should be applied during Mapping 2 instead, so that indicator frameworks that are relevant for few GCM objectives and for which data are only available in few countries could still be included, if they meet the other criteria.

**2** **Number of GCM guiding principles covered** was included as a criterion because the GCM is based on a set of ten cross-cutting and interdependent guiding principles (that is, people-centred, international cooperation, national sovereignty, rule of law and due process, sustainable development, human rights, gender-responsive, child-sensitive, whole-of-government approach, and whole-of-society approach). In their responses to the questionnaire, 91 per cent of respondents agreed that the proposal for a limited set of indicators should incorporate the guiding principles of the GCM. A minimum of 5 principles was chosen as the cut off to operationalize this criterion.

**3** **Relevance for countries belonging to different regions or with different income levels** was selected as a criterion because the GCM seeks to provide a common approach to international migration in all its dimensions. As such, it relates to a range of different types of migrants and members of communities in countries of origin, transit and destination alike.

**4** The **availability of a time series**, operationalized here in terms of the framework having data for two or more points in time, is critical for measuring change. Paragraph 70 of the IMRF Progress Declaration called explicitly for “conducting inclusive reviews of progress related to the implementation of the Global Compact”, which requires data for more than one point in time. In their responses to the questionnaire, 94 per cent of respondents also agreed that the proposal for a limited set of indicators should allow monitoring progress over time.

**5** **Timeliness** was included because the purpose of the proposal for a limited set of indicators is to support Member States who wish to use it to monitor progress related to the implementation of the GCM. Indicators that rely on data that are no longer timely would be of limited relevance for that purpose. The year 2018 (when the GCM was adopted) was chosen as the cut off to define timeliness. This means that at least some of the data in the indicator framework considered is from 5 years ago or less as of 2023.

## 2. Comparison of indicator frameworks in terms of scope and coverage

The workstream compared the 31 indicator frameworks listed in section 2.1 based on the five criteria identified in section 2.2.<sup>7</sup>

Of the 31 indicator frameworks considered, 2 were **endorsed by an intergovernmental body**:

---

<sup>7</sup> Annex 1 provides more detailed information on the analysis.

- SDG Indicator Framework
- UN Expert Group on Migration Statistics (EGMIS) Indicators

Sixteen frameworks **covered 5 or more guiding principles of the GCM**<sup>8</sup>:

- Advancing Alternative Migration Governance
- Analytical Framework and Indicators for Monitoring and Reporting on the Implementation of GCM commitments related to Addressing Human Mobility Challenges in the Context of Disasters, Climate Change and Environmental Degradation (A and B)
- Child protection outcome indicators
- Commitment to development Index: Migration
- Displacement indicators for Disaster Risk Reduction
- Every Immigrant Is an Emigrant: How Migration Policies Shape the Paths to Integration (IMISEM)
- Global Compact on Refugees Indicator Framework
- Human Rights Indicators for Migrants and their Families
- International Data Alliance for Children on the Move (IDAC) Guidelines on Indicators for Children on the Move
- Measuring Policy Coherence for Migration and Development
- Migration Governance Indicators (MGI)
- Migrant Rights Initiative/ database
- Multiculturalism Policy Index
- SDG Indicator Framework
- Statelessness index
- UN Expert Group on Migration Statistics (EGMIS) Indicators

Eighteen indicator frameworks were considered **relevant for countries belonging to different regions or with different income levels**:<sup>9</sup>

- Analytical Framework and Indicators for Monitoring and Reporting on the Implementation of GCM commitments related to Addressing Human Mobility Challenges in the Context of Disasters, Climate Change and Environmental Degradation (A and B)
- CITLAW Global Birthright Indicators
- Commitment to development Index: Migration
- Determinants of international migration (DEMIG)
- Every Immigrant Is an Emigrant: How Migration Policies Shape the Paths to Integration (IMISEM)
- Global Compact on Refugees Indicator Framework
- Immigration Policies in Comparison (IMPIC)
- Indicators of Citizenship Rights for Immigrants (ICRI)
- Indicators of Immigrant Integration
- International Data Alliance for Children on the Move (IDAC) Guidelines on Indicators for Children on the Move

<sup>8</sup> Annex 2 provides the list of guiding principles covered by each framework.

<sup>9</sup> For some of these indicator frameworks, the availability of country data by region or by income group varies by indicator.



- MACIMIDE Global Expatriate Dual Citizenship Dataset
- Measuring Policy Coherence for Migration and Development
- Migration Governance Indicators (MGI)
- Migrant Integration Policy Index (MIPEX)
- Migrant Rights Initiative/ database
- OECD Indicators of Talent Attractiveness
- SDG Indicator Framework
- UN Expert Group on Migration Statistics (EGMIS) Indicators

Twenty-two of the indicator frameworks considered had **data for 2 or more years**<sup>10</sup>:

- CITLAW Global Birthright Indicators
- Commitment to development Index: Migration
- CrossMigration policy indicators
- Determinants of international migration (DEMIG)
- Emigrant Policy Index
- Every Immigrant Is an Emigrant: How Migration Policies Shape the Paths to Integration (IMISEM)
- Global Compact on Refugees Indicator Framework
- Immigration Policies in Comparison (IMPIC)
- Index on strictness of migration policy
- Indicators of Citizenship Rights for Immigrants (ICRI)
- Indicators of Immigrant Integration
- International Data Alliance for Children on the Move (IDAC) Guidelines on Indicators for Children on the Move
- International Migration Policy and Law Analysis (IMPALA)
- MACIMIDE Global Expatriate Dual Citizenship Dataset
- Migration Governance Indicators (MGI)
- Migrant Integration Policy Index (MIPEX)
- Multiculturalism Policy Index
- OECD Indicators of Talent Attractiveness
- RemitSCOPE
- SDG Indicator Framework
- Statelessness index
- UN Expert Group on Migration Statistics (EGMIS) Indicators

Eighteen of the frameworks had indicators with **at least some data available since 2018**<sup>11</sup>:

- Advancing Alternative Migration Governance
- CITLAW Global Birthright Indicators

<sup>10</sup> For some of these indicator frameworks, the availability of a time series varies by indicator.

<sup>11</sup> For some of these indicator frameworks, the timeliness of data varies by indicator.

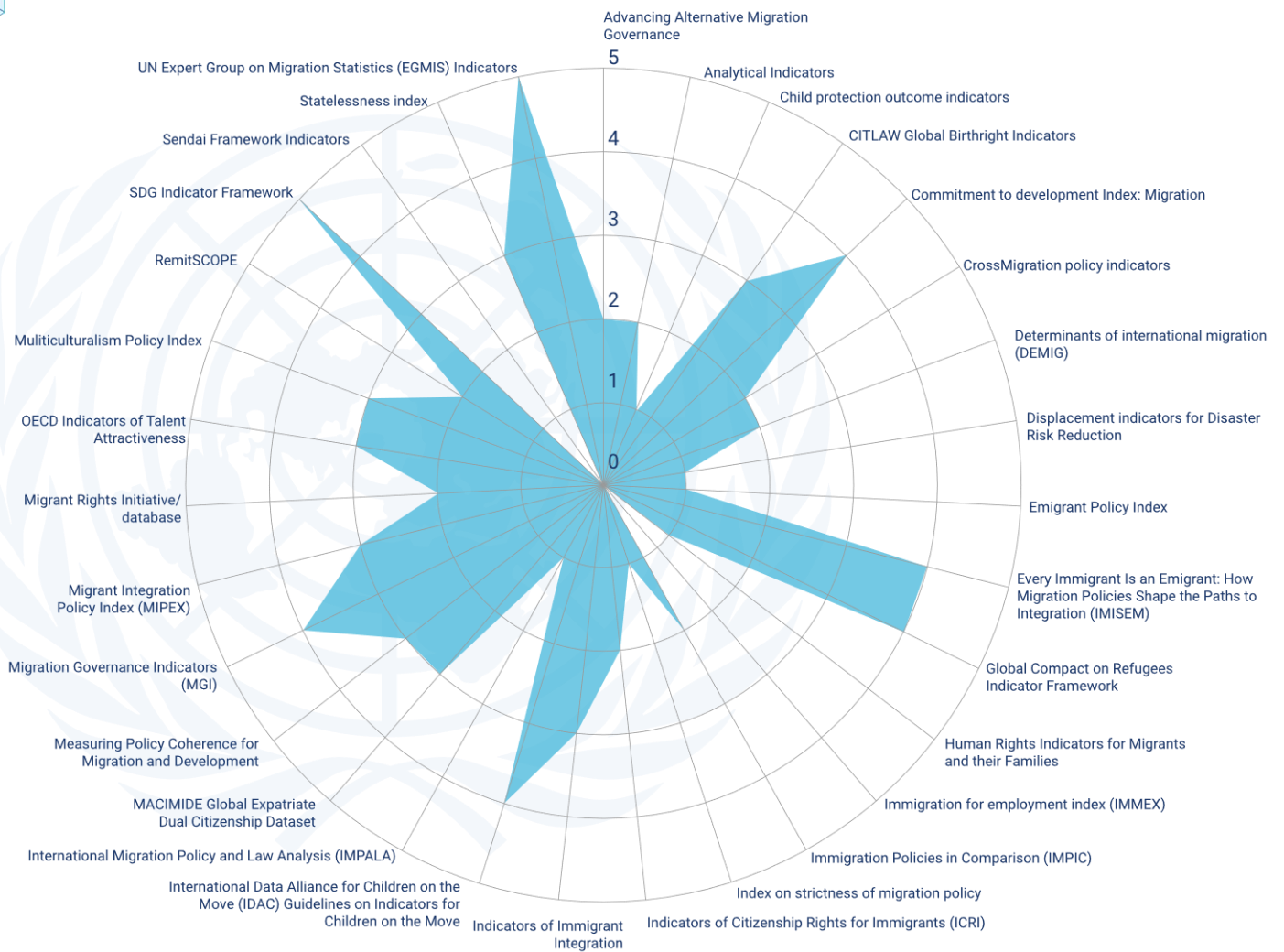
- Commitment to development Index: Migration
- CrossMigration policy indicators
- Every Immigrant Is an Emigrant: How Migration Policies Shape the Paths to Integration (IMISEM)
- Global Compact on Refugees Indicator Framework
- Indicators of Immigrant Integration
- International Data Alliance for Children on the Move (IDAC) Guidelines on Indicators for Children on the Move
- MACIMIDE Global Expatriate Dual Citizenship Dataset
- Measuring Policy Coherence for Migration and Development
- Migration Governance Indicators (MGI)
- Migrant Integration Policy Index (MIPEX)
- Multiculturalism Policy Index
- OECD Indicators of Talent Attractiveness
- RemitSCOPE
- SDG Indicator Framework
- Statelessness index
- UN Expert Group on Migration Statistics (EGMIS) Indicators

### **3. Summary of the comparison based on the five criteria**

The comparison of indicator frameworks yielded a snapshot of the coverage and scope of existing indicator frameworks. It showed that the 31 indicator frameworks considered vary greatly in terms of the criteria considered, namely having been endorsed by an intergovernmental body; the number of GCM guiding principles covered; relevance for countries belonging to different regions or with different income levels; availability of a time series; and timeliness (Figure 3).



**Figure 3.**  
**Comparison of indicator frameworks based on the five criteria<sup>12</sup>**  
**(Number of criteria per framework)**



**Note: The names of the frameworks were shortened to fit the graph.**

Twenty-three of the indicator frameworks considered met three or fewer of the selected criteria:<sup>13</sup>

- Advancing Alternative Migration Governance
- Analytical Framework and Indicators for Monitoring and Reporting on the Implementation of GCM commitments related to Addressing Human Mobility Challenges in the Context of Disasters, Climate Change and Environmental Degradation (A and B)
- Child protection outcome indicators
- CITLAW Global Birthright Indicators
- CrossMigration policy indicators
- Determinants of international migration (DEMIG)

<sup>12</sup> All criteria were weighted equally.

<sup>13</sup> None of these frameworks was endorsed by an intergovernmental body.

- Displacement indicators for Disaster Risk Reduction
- Emigrant Policy Index
- Human Rights Indicators for Migrants and their Families
- Immigration for employment index (IMMEX)
- Immigration Policies in Comparison (IMPIC)
- Index on strictness of migration policy
- Indicators of Citizenship Rights for Immigrants (ICRI)
- Indicators of Immigrant Integration
- International Migration Policy and Law Analysis (IMPALA)
- MACIMIDE Global Expatriate Dual Citizenship Dataset
- Measuring Policy Coherence for Migration and Development
- Migrant Integration Policy Index (MIPEX)
- Migrant Rights Initiative/ database
- Multiculturalism Policy Index
- OECD Indicators of Talent Attractiveness
- RemitSCOPE
- Sendai Framework Indicators

Five indicator frameworks met four criteria:<sup>14</sup>

- Commitment to development Index: Migration
- Every Immigrant Is an Emigrant: How Migration Policies Shape the Paths to Integration (IMISEM)
- Global Compact on Refugees Indicator Framework
- International Data Alliance for Children on the Move (IDAC) Guidelines on Indicators for Children on the Move
- Migration Governance Indicators (MGI)

And two frameworks met all five criteria:

- SDG Indicator Framework
  - UN Expert Group on Migration Statistics (EGMIS) Indicators
- These two frameworks were also the only ones among the 31 considered to have been endorsed by an intergovernmental body.

#### 4. Indicator frameworks to be included in Mapping 2

Based on the analysis presented in the previous sections, the workstream chose to include the seven indicator frameworks that met four or more of the comparison criteria in Mapping 2:

- Commitment to development Index: Migration
- Every Immigrant Is an Emigrant: How Migration Policies Shape the Paths to Integration (IMISEM)

---

<sup>14</sup> None of these frameworks was endorsed by an intergovernmental body.

- Global Compact on Refugees Indicator Framework
- International Data Alliance for Children on the Move (IDAC) Guidelines on Indicators for Children on the Move
- Migration Governance Indicators (MGI)
- SDG Indicator Framework
- UN Expert Group on Migration Statistics (EGMIS) Indicators

Mapping 2 will consider all indicators from these seven indicator frameworks provided that they are also relevant to one or more GCM objective or guiding principle.<sup>15</sup> As in Mapping 1, all indicators will be compared based on a set of criteria, including their relevance for GCM objectives and guiding principles; the existence of an agreed methodology; data availability by country and by region; the availability of a time series; timeliness; whether the indicator can be disaggregated by relevant characteristics such as sex, age and migratory status and whether such data are already collected; whether the indicator is multipurpose, meaning that it is relevant for more than one GCM objective or principle; and whether the indicator is included in more than one indicator framework.

Mapping 2, together with additional documents and processes, including the text of the Global Compact on Safe, Orderly and Regular Migration and of Paragraph 70 of the IMRF Progress Declaration, as well as responses from member states and stakeholders to the [canvassing questionnaire](#), and additional inputs from, and discussion among, the members of the workstream 1 and, where relevant, other workstreams of the UN Migration Network, will inform the first proposal for a limited set of indicators, to be disseminated through a discussion note

### **Corrigendum**

*The Analytical Framework and Indicators for Monitoring and Reporting on the Implementation of GCM commitments related to Addressing Human Mobility Challenges in the Context of Disasters, Climate Change and Environmental Degradation meets the timeliness criterion. This framework therefore meets a total of three comparison criteria.*

---

<sup>15</sup> Individual indicators from frameworks that did not fulfill four or more criteria in Mapping 1 may still be included in the proposal if the workstream identifies gaps in the coverage that other indicators provide of GCM objectives and guiding principles.

# Annex 1.

## Comparison of indicator frameworks based on selected criteria

